

Waterfront ~ South Central~ - Apartment Area Schedule

Unit Number	Apt Type	Unit Type	Unit Description	Bedroom Count	Floor to Ceiling Height	Unit Area	Part V Unit Area	Required Areas			Bedroom Areas		Amenity/Storage Areas			Other Features			
								Minimum	10%	Bedroom 1	Bedroom 2	Aggregate Bedroom	Kitchen/Living	Storage Area	Balcony Area	Bicycle Parking	+ 10% Over Min	View/Aspect	Orientation
						m ²													
FIRST FLOOR																			
1A.001	B2	PART V	2 Bedroom Apartment	2	2700mm	74.7	74.7	73	80.3	17.8	12.2	29.8	32.6	6.4	7.5	2	Yes	Single	North
1A.002	B2	PART V	2 Bedroom Apartment	2	2700mm	74.7	74.7	73	80.3	17.8	12.2	29.8	32.6	6.4	7.5	2	Yes	Single	North
1A.003	B16	PART V	2 Bedroom Apartment	2	2700mm	78.5	78.5	73	80.3	12.7	12.8	25.5	36.6	4.8	7.7	2	No	Dual	North/East
1A.004	A9	PART V	1 Bedroom Apartment	1	2700mm	44.7	44.7	45	49.5	12.6	n/a	12.6	22.5	3	5.3	1	No	Single	East
1A.005	A9	PART V	1 Bedroom Apartment	1	2700mm	44.7	44.7	45	49.5	12.6	n/a	12.6	22.5	3	5.3	1	No	Single	East
1A.006	A28	PART V	1 Bedroom Apartment	1	2700mm	45	45	45	49.5	12.6	n/a	12.6	23	3	5.3	1	Yes	Single	East
1A.007	B34	Apartment	2 Bedroom Apartment	2	2700mm	85	85	73	80.3	14.7	13.8	28.5	32	6	7	2	Yes	Dual	East/West
1A.015	B35	PART V	2 Bedroom Apartment	2	2700mm	85.1	85.1	73	80.3	18.4	13.8	32.2	30.3	6	7.1	2	Yes	Dual	East/West
1A.016	A1	PART V	1 Bedroom Apartment	1	2700mm	45.7	45.7	45	49.5	13	n/a	14.9	23.9	3	5.4	1	Yes	Single	West
1A.017	B22	PART V	2 Bedroom Apartment	2	2700mm	78.6	78.6	73	80.3	17.4	11.5	28.9	33.2	6	7.3	2	Yes	Single	South
SECOND FLOOR																			
2A.001	B2	PART V	2 Bedroom Apartment	2	2700mm	74.7	74.7	73	80.3	17.8	12.2	29.8	32.6	6.4	7.5	2	Yes	Single	North
2A.002	B2	PART V	2 Bedroom Apartment	2	2700mm	74.7	74.7	73	80.3	17.8	12.2	29.8	32.6	6.4	7.5	2	Yes	Single	North
2A.003	B16	PART V	2 Bedroom Apartment	2	2700mm	78.5	78.5	73	80.3	12.7	12.8	25.5	36.6	4.8	7.7	2	No	Dual	North/East
2A.004	A9	PART V	1 Bedroom Apartment	1	2700mm	44.7	44.7	45	49.5	12.6	n/a	12.6	22.5	3	5.3	1	No	Single	East
2A.005	A9	PART V	1 Bedroom Apartment	1	2700mm	44.7	44.7	45	49.5	12.6	n/a	12.6	22.5	3	5.3	1	No	Single	East
2A.006	A28	PART V	1 Bedroom Apartment	1	2700mm	45	45	45	49.5	12.6	n/a	12.6	23	3	5.3	1	Yes	Single	East
2A.015	B35	PART V	2 Bedroom Apartment	2	2700mm	85.1	85.1	73	80.3	18.4	13.8	32.2	30.3	6	7.1	2	Yes	Dual	East/West
2A.016	A1	PART V	1 Bedroom Apartment	1	2700mm	45.7	45.7	45	49.5	13	n/a	14.9	23.9	3	5.4	1	Yes	Single	West
2A.017	B22	PART V	2 Bedroom Apartment	2	2700mm	78.6	78.6	73	80.3	17.4	11.5	28.9	33.2	6	7.3	2	Yes	Single	South
THIRD FLOOR																			
3A.001	B2	PART V	2 Bedroom Apartment	2	2700mm	74.7	74.7	73	80.3	17.8	12.2	29.8	32.6	6.4	7.5	2	Yes	Single	North
3A.002	B2	PART V	2 Bedroom Apartment	2	2700mm	74.7	74.7	73	80.3	17.8	12.2	29.8	32.6	6.4	7.5	2	Yes	Single	North
3A.003	B16	PART V	2 Bedroom Apartment	2	2700mm	78.5	78.5	73	80.3	12.7	12.8	25.5	36.6	4.8	7.7	2	No	Dual	North/East
3A.004	A9	PART V	1 Bedroom Apartment	1	2700mm	44.7	44.7	45	49.5	12.6	n/a	12.6	22.5	3	5.3	1	No	Single	East
3A.005	A9	PART V	1 Bedroom Apartment	1	2700mm	44.7	44.7	45	49.5	12.6	n/a	12.6	22.5	3	5.3	1	No	Single	East
3A.006	A28	PART V	1 Bedroom Apartment	1	2700mm	45	45	45	49.5	12.6	n/a	12.6	23	3	5.3	1	Yes	Single	East
3A.016	B35	PART V	2 Bedroom Apartment	2	2700mm	85.1	85.1	73	80.3	18.4	13.8	32.2	30.3	6	7.1	2	Yes	Dual	East/West
3A.017	A1	PART V	1 Bedroom Apartment	1	2700mm	45.7	45.7	45	49.5	13	n/a	14.9	23.9	3	5.4	1	Yes	Single	West
3A.018	B22	PART V	2 Bedroom Apartment	2	2700mm	78.6	78.6	73	80.3	17.4	11.5	28.9	33.2	6	7.3	2	Yes	Single	South

Waterfront ~ South Central~ - Apartment Area Schedule

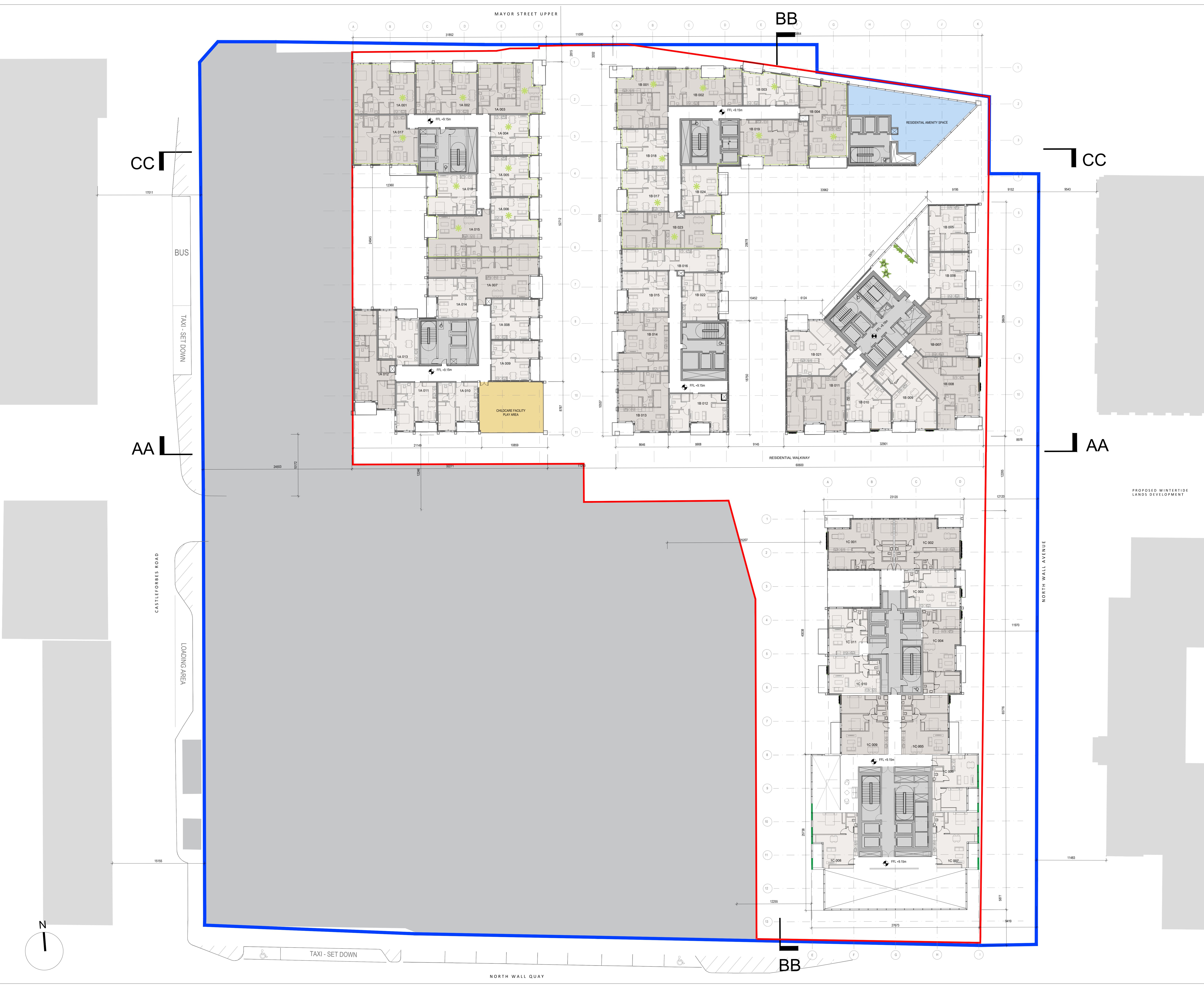
Unit Number	Apt Type	Unit Type	Unit Description	Bedroom Count	Floor to Ceiling Height	Unit Area	Part V Unit Area	Required Areas			Bedroom Areas			Amenity/Storage Areas			Other Features		
								Minimum	10%	Bedroom 1	Bedroom 2	Aggregate Bedroom	Kitchen/Living	Storage Area	Balcony Area	Bicycle Parking	+ 10% Over Min	View/Aspect	Orientation
FOURTH FLOOR																			
4A.001	B2	PART V	2 Bedroom Apartment	2	2700mm	74.7	74.7	73	80.3	17.8	12.2	29.8	32.6	6.4	7.5	2	Yes	Single	North
4A.002	B2	PART V	2 Bedroom Apartment	2	2700mm	74.7	74.7	73	80.3	17.8	12.2	29.8	32.6	6.4	7.5	2	Yes	Single	North
4A.003	B16	PART V	2 Bedroom Apartment	2	2700mm	78.5	78.5	73	80.3	12.7	12.8	25.5	36.6	4.8	7.7	2	No	Dual	North/East
4A.004	A9	PART V	1 Bedroom Apartment	1	2700mm	44.7	44.7	45	49.5	12.6	n/a	12.6	22.5	3	5.3	1	No	Single	East
4A.005	A9	PART V	1 Bedroom Apartment	1	2700mm	44.7	44.7	45	49.5	12.6	n/a	12.6	22.5	3	5.3	1	No	Single	East
4A.006	A28	PART V	1 Bedroom Apartment	1	2700mm	45	45	45	49.5	12.6	n/a	12.6	23	3	5.3	1	Yes	Single	East
4A.016	B35	PART V	2 Bedroom Apartment	2	2700mm	85.1	85.1	73	80.3	18.4	13.8	32.2	30.3	6	7.1	2	Yes	Dual	East/West
4A.017	A1	PART V	1 Bedroom Apartment	1	2700mm	45.7	45.7	45	49.5	13	n/a	14.9	23.9	3	5.4	1	Yes	Single	West
4A.018	B22	PART V	2 Bedroom Apartment	2	2700mm	78.6	78.6	73	80.3	17.4	11.5	28.9	33.2	6	7.3	2	Yes	Single	South
FIFTH FLOOR																			
5A.001	B2	PART V	2 Bedroom Apartment	2	2700mm	74.7	74.7	73	80.3	17.8	12.2	29.8	32.6	6.4	7.5	2	Yes	Single	North
5A.002	B2	PART V	2 Bedroom Apartment	2	2700mm	74.7	74.7	73	80.3	17.8	12.2	29.8	32.6	6.4	7.5	2	Yes	Single	North
5A.003	B16	PART V	2 Bedroom Apartment	2	2700mm	78.5	78.5	73	80.3	12.7	12.8	25.5	36.6	4.8	7.7	2	No	Dual	North/East
5A.018	B22	PART V	2 Bedroom Apartment	2	2700mm	78.6	78.6	73	80.3	17.4	11.5	28.9	33.2	6	7.3	2	Yes	Single	South

Waterfront ~ South Central~ - Apartment Area Schedule

Unit Number	Apt Type	Unit Type	Unit Description	Bedroom Count	Floor to Ceiling Height	Unit Area	Part V Unit Area	Required Areas		Bedroom Areas			Amenity/Storage Areas			Other Features			
								Minimum	10%	Bedroom 1	Bedroom 2	Aggregate Bedroom	Kitchen/Living	Storage Area	Balcony Area	Bicycle Parking	+ 10% Over Min	View/Aspect	Orientation
GROUND																			
0B.001	B13	Part V	2 Bedroom Apartment	2		76	76	73	80.3	14.3	13.8	28.1	30	7.2	GF	2	Yes	Single	West
0B.002	A13	Part V	1 Bedroom Apartment	1		45.1	45.1	45	49.5	11.5	n/a	11.5	24.6	3	GF	1	No	Dual	North/West
0B.003	A14	Part V	1 Bedroom Apartment	1		54.9	54.9	45	49.5	12.6	n/a	12.6	30	5.6	GF	1	Yes	Single	North
0B.004	B14	Part V	2 Bedroom Apartment	2		64	64	63	69.3	13.4	7.4	20.8	27	5.2	GF	2	No	Single	North
FIRST FLOOR																			
1B.001	B15	Part V	2 Bedroom Apartment	2	2700mm	75.7	75.7	73	80.3	12.1	12.1	24	36.3	4	6.5	2	No	Dual	North/West
1B.002	B6	Part V	2 Bedroom Apartment	2	2700mm	65.7	65.7	63	69.3	11.2	9.2	20.4	30	3	7.1	2	No	Single	North
1B.003	A3	Part V	1 Bedroom Apartment	1	2700mm	46.7	46.7	45	49.5	10	n/a	10	26.7	3.3	4.9	1	No	Single	North
1B.004	B5	Part V	2 Bedroom Apartment	2	2700mm	81	81	73	80.3	16.9	11.8	28.7	31	5	14.6	2	Yes	Dual	North/South
1B.017	A12	Part V	1 Bedroom Apartment	1	2700mm	46.3	46.3	45	49.5	12	n/a	12	24	3	5.4	1	No	Single	West
1B.018	A12	Part V	1 Bedroom Apartment	1	2700mm	46.3	46.3	45	49.5	12	n/a	12	24	3	5.4	1	No	Single	West
1B.019	B33	Part V	2 Bedroom Apartment	2	2700mm	76	76	73	80.3	15.6	13	28.6	27.6	6	7	2	No	Single	South
1B.023	B36	Part V	2 Bedroom Apartment	2	2700mm	86.6	86.6	73	80.3	12.9	12	24.9	38	6.2	7.7	2	Yes	Dual	East/West
1B.024	A15	Part V	1 Bedroom Apartment	1	2700mm	47.4	47.4	45	49.5	11.7	n/a	11.7	26.2	3	5.5	1	No	Single	West
SECOND FLOOR																			
2B.001	B15	Part V	2 Bedroom Apartment	2	2700mm	75.7	75.7	73	80.3	12.1	12.1	24	36.3	4	6.5	2	No	Dual	North/West
2B.002	B6	Part V	2 Bedroom Apartment	2	2700mm	65.7	65.7	63	69.3	11.2	9.2	20.4	30	3	7.1	2	No	Single	North
2B.003	A3	Part V	1 Bedroom Apartment	1	2700mm	46.7	46.7	45	49.5	10	n/a	10	26.7	3.3	4.9	1	No	Single	North
2B.004	B5	Part V	2 Bedroom Apartment	2	2700mm	81	81	73	80.3	16.9	11.8	28.7	31	5	14.6	2	Yes	Dual	North/South
2B.005	A2	Part V	1 Bedroom Apartment	1	2700mm	56.7	56.7	45	49.5	16	n/a	16	30	3.9	7	1	Yes	Single	North
2B.006	B4	Part V	2 Bedroom Apartment	2	2700mm	77	77	73	80.3	11.8	11	22.6	41	5	6.5	2	No	Dual	North/East
2B.007	A35	Part V	1 Bedroom Apartment	1	2700mm	47	47	45	49.5	13.2	n/a	13	23.7	3	7	1	No	Single	East
2B.008	A24	Part V	1 Bedroom Apartment	1	2700mm	52.4	52.4	45	49.5	12.6	n/a	12.4	23.6	6	6.7	1	Yes	Single	East
2B.020	A12	Part V	1 Bedroom Apartment	1	2700mm	46.3	46.3	45	49.5	12	n/a	12	24	3	5.4	1	No	Single	West
2B.021	A12	Part V	1 Bedroom Apartment	1	2700mm	46.3	46.3	45	49.5	12	n/a	12	24	3	5.4	1	No	Single	West
2B.022	B33	Part V	2 Bedroom Apartment	2	2700mm	76	76	73	80.3	15.6	13	28.6	27.6	6	7	2	No	Single	South
2B.023	B11	Part V	2 Bedroom Apartment	2	2700mm	74	74	73	80.3	13.8	11.8	25.6	29	5.4	6.6	2	No	Single	West
2B.027	B36	Part V	2 Bedroom Apartment	2	2700mm	86.6	86.6	73	80.3	12.9	12	24.9	38	6.2	7.7	2	Yes	Dual	East/West
2B.028	A15	Part V	1 Bedroom Apartment	1	2700mm	47.4	47.4	45	49.5	11.7	n/a	11.7	26.2	3	5.5	1	No	Single	East

Waterfront ~ South Central~ - Apartment Area Schedule

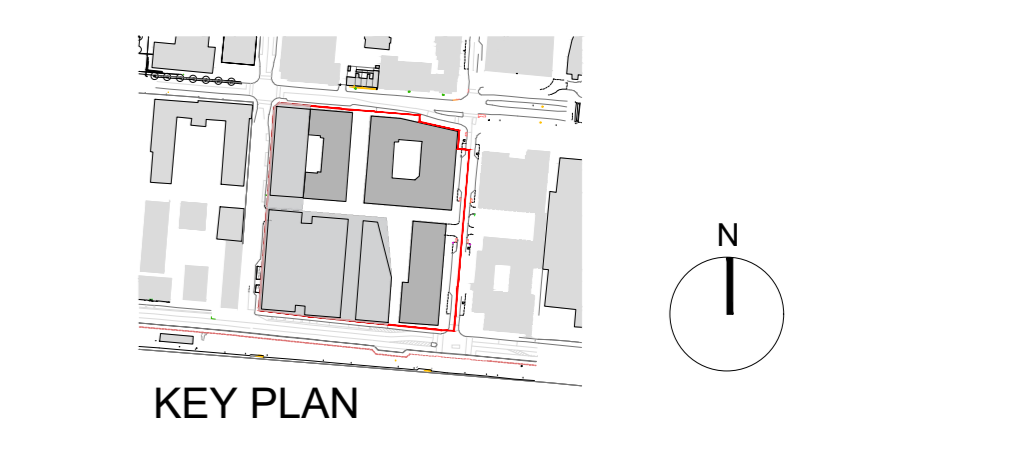
Unit Number	Apt Type	Unit Type	Unit Description	Bedroom Count	Floor to Ceiling Height	Unit Area	Part V Unit Area	Required Areas		Bedroom Areas			Amenity/Storage Areas			Other Features			
								Minimum	10%	Bedroom 1	Bedroom 2	Aggregate Bedroom	Kitchen/Living	Storage Area	Balcony Area	Bicycle Parking	+ 10% Over Min	View/Aspect	Orientation
THIRD FLOOR																			
3B.001	B15	Part V	2 Bedroom Apartment	2	2700mm	75.7	75.7	73	80.3	12.1	12.1	24	36.3	4	6.5	2	No	Dual	North/West
3B.002	B6	Part V	2 Bedroom Apartment	2	2700mm	65.7	65.7	63	69.3	11.2	9.2	20.4	30	3	7.1	2	No	Single	North
3B.003	A3	Part V	1 Bedroom Apartment	1	2700mm	46.7	46.7	45	49.5	10	n/a	10	26.7	3.3	4.9	1	No	Single	North
3B.004	B5	Part V	2 Bedroom Apartment	2	2700mm	81	81	73	80.3	16.9	11.8	28.7	31	5	14.6	2	Yes	Dual	North/South
3B.005	A2	Part V	1 Bedroom Apartment	1	2700mm	56.7	56.7	45	49.5	16	n/a	16	30	3.9	7	1	Yes	Single	North
3B.006	B4	Part V	2 Bedroom Apartment	2	2700mm	77	77	73	80.3	11.8	11	22.6	41	5	6.5	2	No	Dual	North/East
3B.007	A35	Part V	1 Bedroom Apartment	1	2700mm	47	47	45	49.5	13.2	n/a	13	23.7	3	7	1	No	Single	East
3B.008	A24	Part V	1 Bedroom Apartment	1	2700mm	52.4	52.4	45	49.5	12.6	n/a	12.4	23.6	6	6.7	1	Yes	Single	East
3B.021	A12	Part V	1 Bedroom Apartment	1	2700mm	46.3	46.3	45	49.5	12	n/a	12	24	3	5.4	1	No	Single	West
3B.022	A12	Part V	1 Bedroom Apartment	1	2700mm	46.3	46.3	45	49.5	12	n/a	12	24	3	5.4	1	No	Single	West
3B.023	B33	Part V	2 Bedroom Apartment	2	2700mm	76	76	73	80.3	15.6	13	28.6	27.6	6	7	2	No	Single	South
3B.024	B11	Part V	2 Bedroom Apartment	2	2700mm	74	74	73	80.3	13.8	11.8	25.6	29	5.4	6.6	2	No	Single	West
3B.029	B36	Part V	2 Bedroom Apartment	2	2700mm	86.6	86.6	73	80.3	12.9	12	24.9	38	6.2	7.7	2	Yes	Dual	East/West
3B.030	A15	Part V	1 Bedroom Apartment	1	2700mm	47.4	47.4	45	49.5	11.7	n/a	11.7	26.2	3	5.5	1	No	Single	East
FOURTH FLOOR																			
4B.001	B15	Part V	2 Bedroom Apartment	2	2700mm	75.7	75.7	73	80.3	12.1	12.1	24	36.3	4	6.5	2	No	Dual	North/West
4B.002	B6	Part V	2 Bedroom Apartment	2	2700mm	65.7	65.7	63	69.3	11.2	9.2	20.4	30	3	7.1	2	No	Single	North
4B.003	A3	Part V	1 Bedroom Apartment	1	2700mm	46.7	46.7	45	49.5	10	n/a	10	26.7	3.3	4.9	1	No	Single	North
4B.004	B5	Part V	2 Bedroom Apartment	2	2700mm	81	81	73	80.3	16.9	11.8	28.7	31	5	14.6	2	Yes	Dual	North/South
4B.005	A2	Part V	1 Bedroom Apartment	1	2700mm	56.7	56.7	45	49.5	16	n/a	16	30	3.9	7	1	Yes	Single	North
4B.006	B4	Part V	2 Bedroom Apartment	2	2700mm	77	77	73	80.3	11.8	11	22.6	41	5	6.5	2	No	Dual	North/East
4B.007	A35	Part V	1 Bedroom Apartment	1	2700mm	47	47	45	49.5	13.2	n/a	13	23.7	3	7	1	No	Single	East
4B.008	A24	Part V	1 Bedroom Apartment	1	2700mm	52.4	52.4	45	49.5	12.6	n/a	12.4	23.6	6	6.7	1	Yes	Single	East
4B.021	A12	Part V	1 Bedroom Apartment	1	2700mm	46.3	46.3	45	49.5	12	n/a	12	24	3	5.4	1	No	Single	West
4B.022	A12	Part V	1 Bedroom Apartment	1	2700mm	46.3	46.3	45	49.5	12	n/a	12	24	3	5.4	1	No	Single	West
4B.023	B33	Part V	2 Bedroom Apartment	2	2700mm	76	76	73	80.3	15.6	13	28.6	27.6	6	7	2	No	Single	South
4B.024	B11	Part V	2 Bedroom Apartment	2	2700mm	74	74	73	80.3	13.8	11.8	25.6	29	5.4	6.6	2	No	Single	West
4B.029	B36	Part V	2 Bedroom Apartment	2	2700mm	86.6	86.6	73	80.3	12.9	12	24.9	38	6.2	7.7	2	Yes	Dual	East/West
4B.030	A15	Part V	1 Bedroom Apartment	1	2700mm	47.4	47.4	45	49.5	11.7	n/a	11.7	26.2	3	5.5	1	No	Single	East
FIFTH FLOOR																			
5B.005	A2	Part V	1 Bedroom Apartment	1	2700mm	56.7	56.7	45	49.5	16	n/a	16	30	3.9	7	1	Yes	Single	North
5B.006	B4	Part V	2 Bedroom Apartment	2	2700mm	77	77	73	80.3	11.8	11	22.6	41	5	6.5	2	No	Dual	North/East
5B.007	A35	Part V	1 Bedroom Apartment	1	2700mm	47	47	45	49.5	13.2	n/a	13	23.7	3	7	1	No	Single	East
5B.008	A24	Part V	1 Bedroom Apartment	1	2700mm	52.4	52.4	45	49.5	12.6	n/a	12.4	23.6	6	6.7	1	Yes	Single	East
5B.023	B11	Part V	2 Bedroom Apartment	2	2700mm	74	74	73	80.3	13.8	11.8	25.6	29	5.4	6.6	2	No	Single	West
						307.1													



NOTE
 ALL DIMENSIONS TO BE CHECKED ON SITE
 NO DIMENSIONS TO BE SCALED FROM THIS DRAWING
 THIS DRAWING IS TO BE READ IN CONJUNCTION WITH RELEVANT CONSULTANTS DRAWINGS
 ANY PROPOSALS EXTERNAL TO THE REDLINE ARE INDICATIVE ONLY.

- * Part V apartment
- 1 Bedroom apartment
- 2 Bedrooms apartment
- 3 Bedrooms apartment
- Residential Amenity
- Residential Support Facilities
- Other Uses/ Office
- Hoarding line - Not part of this application

NOTE:
 - COMMERCIAL LAYOUTS SHOWN FOR INDICATIVE PURPOSES ONLY SUBJECT TO SEPARATE PLANNING APPLICATION
 - LEVELS SHOWN RELATE TO OS DATUM LEVELS



NOTE
 ALL DIMENSIONS TO BE CHECKED ON SITE
 NO DIMENSIONS TO BE SCALED FROM THIS DRAWING
 THIS DRAWING IS TO BE READ IN CONJUNCTION WITH RELEVANT CONSULTANTS DRAWINGS

REV	DATE	DESCRIPTION	CHKD	DRN
5	27/05/2020	ABP Response Issue	GC	NP
4	24/04/2020	Issued for information	GC	NP
3	29/11/2019	SHD Consultation Request	GC	NP
2	21/11/2019	DRAFT SHD Submission	GC	NP
1	12/11/2019	DRAFT SHD Submission	GC	NP

APPLICATION REFERENCE NO.: ABP-306158-19
PLANNING

Henry J Lyons
 Architecture • Interiors +353 1 888 3333 51-54 Pearse Street
 henryjlyons.com info@henryjlyons.com Dublin D02 KA66

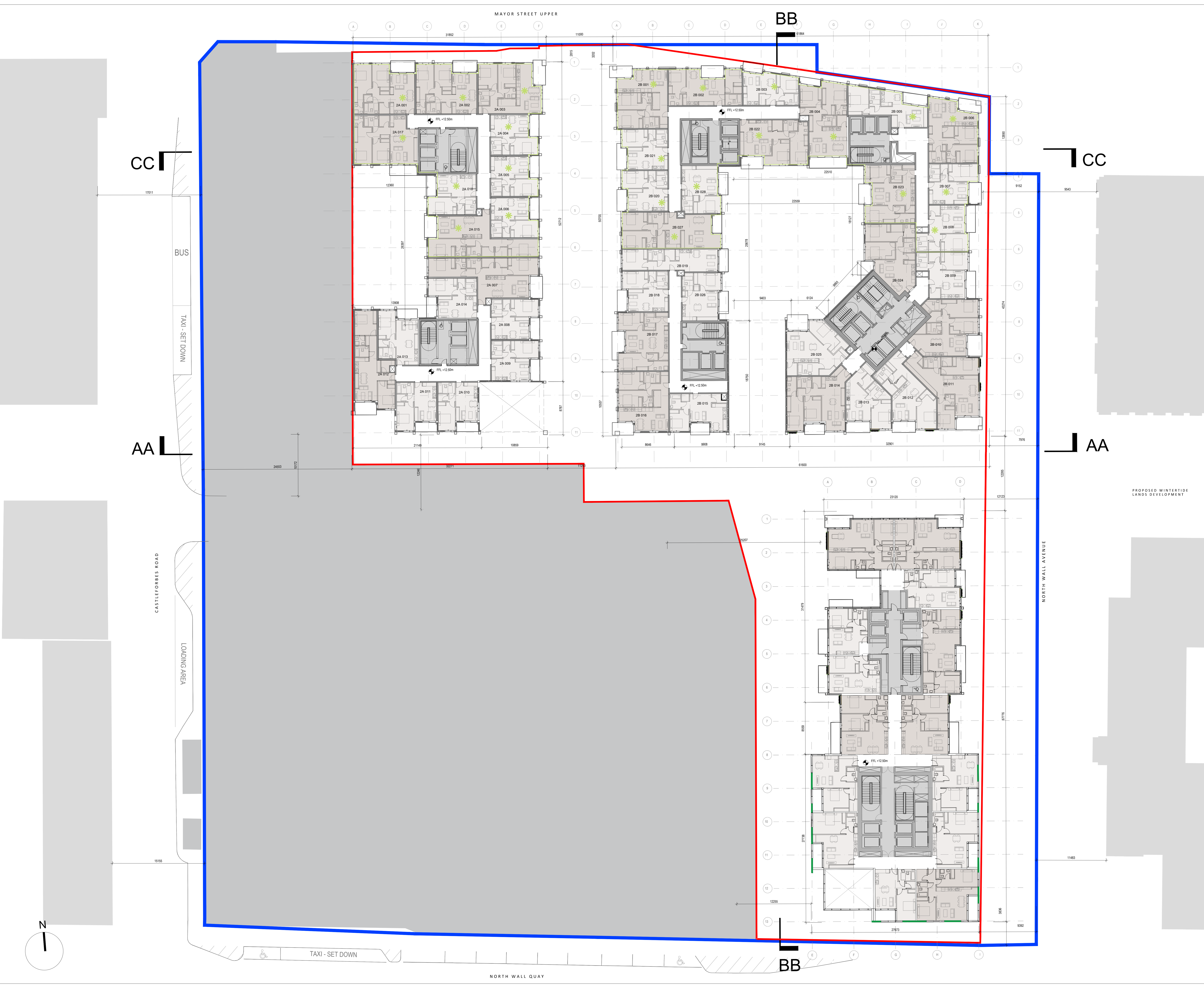
CLIENT
Waterside Block 9 Developments Limited

PROJECT
WATERFRONT ~ South Central ~

JOB NUMBER: 950527
 DATE: May 2020
 SCALE: 1:200 @A0
 DRAWN: NP
 CHECKED: GC
 FILE NAME: P 1011 First Floor Plan

DRAWING
First Floor Level 01 SCENARIO A

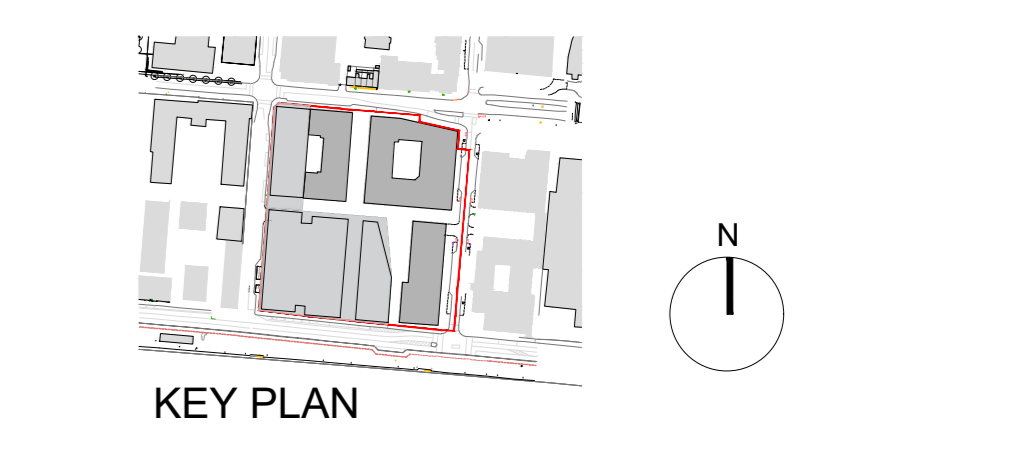
BLOCK	DRAWING NUMBER	ZONE	REVISION
	P1011A		5



NOTE
 ALL DIMENSIONS TO BE CHECKED ON SITE
 NO DIMENSIONS TO BE SCALED FROM THIS DRAWING
 THIS DRAWING IS TO BE READ IN CONJUNCTION WITH RELEVANT CONSULTANTS DRAWINGS
 ANY PROPOSALS EXTERNAL TO THE REDLINE ARE INDICATIVE ONLY.

- Part V apartment
- 1 Bedroom apartment
- 2 Bedrooms apartment
- 3 Bedrooms apartment
- Residential Amenity
- Residential Support Facilities
- Other Uses/ Office
- Hoarding line - Not part of this application

NOTE:
 - COMMERCIAL LAYOUTS SHOWN FOR INDICATIVE PURPOSES ONLY SUBJECT TO SEPARATE PLANNING APPLICATION
 - LEVELS SHOWN RELATE TO OS DATUM LEVELS



NOTE
 ALL DIMENSIONS TO BE CHECKED ON SITE
 NO DIMENSIONS TO BE SCALED FROM THIS DRAWING
 THIS DRAWING IS TO BE READ IN CONJUNCTION WITH RELEVANT CONSULTANTS DRAWINGS

REV	DATE	DESCRIPTION	CHKD	DRN
5	27/05/2020	ABP Response Issue	GC	NP
4	24/04/2020	Issued for information	GC	NP
3	29/11/2019	SHD Consultation Request	GC	NP
2	21/11/2019	DRAFT SHD Submission	GC	NP
1	12/11/2019	DRAFT SHD Submission	GC	NP

APPLICATION REFERENCE NO.: ABP-306158-19
PLANNING

Henry J Lyons
 Architecture • Interiors +353 1 888 3333 51-54 Pearse Street
 henryjlyons.com info@henryjlyons.com Dublin D02 KA66

CLIENT
Waterside Block 9 Developments Limited

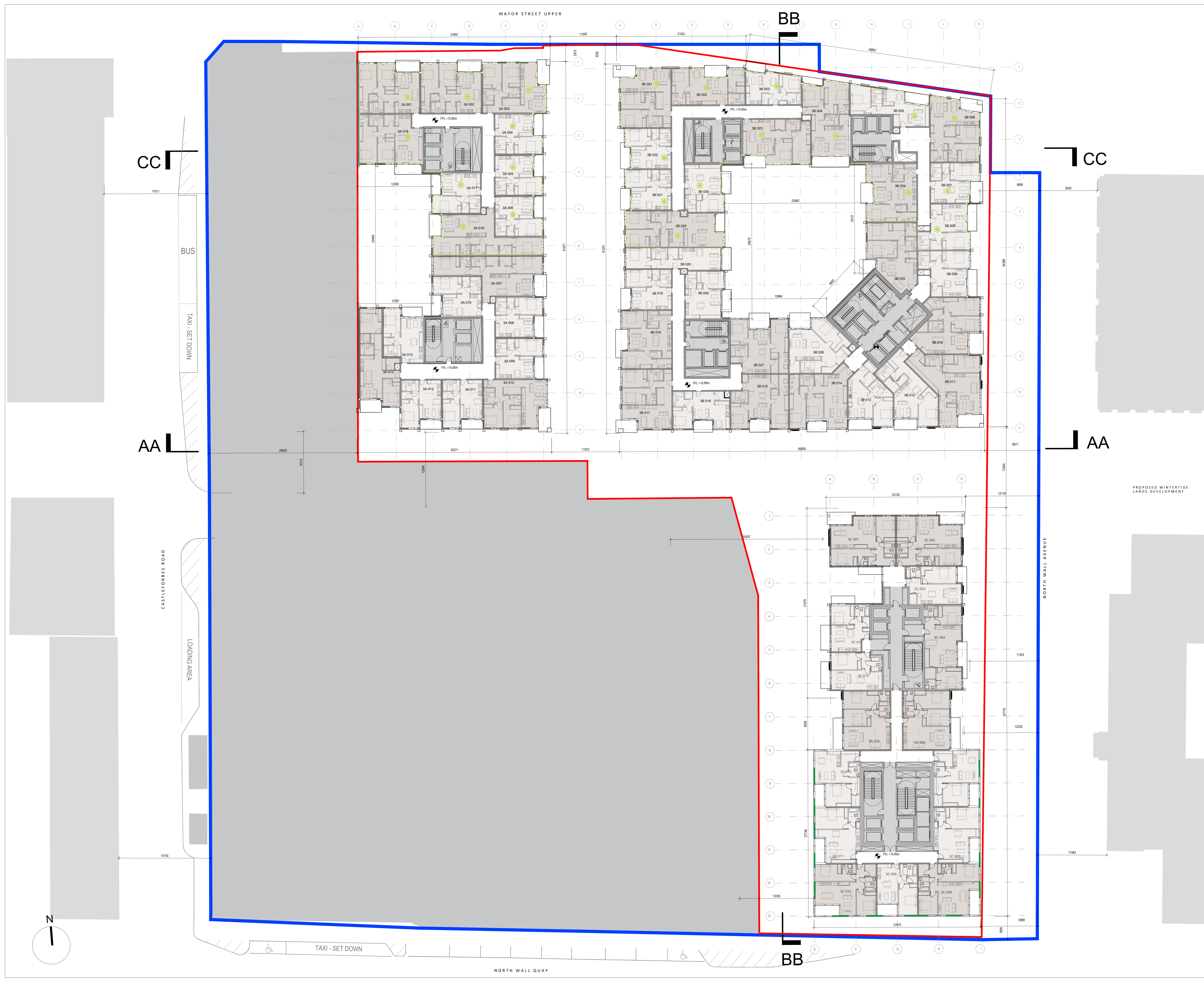
PROJECT
**WATERFRONT
 ~ South Central ~**

JOB NUMBER: 950527
 DATE: May 2020
 SCALE: 1:200 @A0
 DRAWN: NP
 CHECKED: GC
 FILE NAME: P_1012 Second Floor Plan

DRAWING
**Second Floor Level 02
 SCENARIO A**

BLOCK	DRAWING NUMBER	ZONE	REVISION
	P1012A		5

© Henry J Lyons
 T:\jobs\90-950527 City Block 9 Residential\CAD\Design\1000 GA Plans

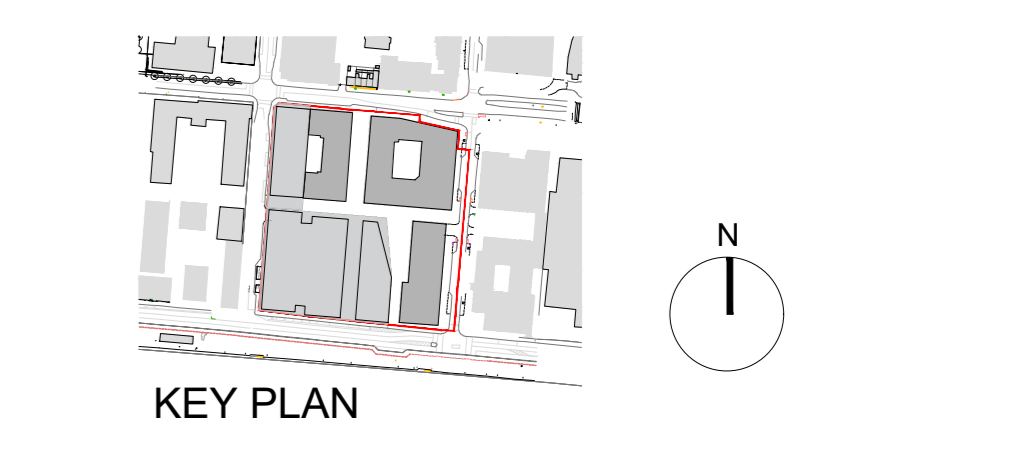


NOTE
 ALL DIMENSIONS TO BE CHECKED ON SITE
 NO DIMENSIONS TO BE SCALED FROM THIS DRAWING
 THIS DRAWING IS TO BE READ IN CONJUNCTION WITH
 RELEVANT CONSULTANTS DRAWINGS

ANY PROPOSALS EXTERNAL TO THE REDLINE ARE INDICATIVE ONLY.

- * Part V apartment
- 1 Bedroom apartment
- 2 Bedrooms apartment
- 3 Bedrooms apartment
- Residential Amenity
- Residential Support Facilities
- Other Uses/ Office
- Hoarding line - Not part of this application

NOTE:
 - COMMERCIAL LAYOUTS SHOWN FOR INDICATIVE PURPOSES ONLY SUBJECT TO SEPARATE PLANNING APPLICATION
 - LEVELS SHOWN RELATE TO OS DATUM LEVELS



NOTE
 ALL DIMENSIONS TO BE CHECKED ON SITE
 NO DIMENSIONS TO BE SCALED FROM THIS DRAWING
 THIS DRAWING IS TO BE READ IN CONJUNCTION WITH
 RELEVANT CONSULTANTS DRAWINGS

REV	DATE	DESCRIPTION	CHKD	DRN
5	27/05/2020	ABP Response Issue	GC	NP
4	24/04/2020	Issued for information	GC	NP
3	29/11/2019	SHD Consultation Request	GC	NP
2	21/11/2019	DRAFT SHD Submission	GC	NP
1	12/11/2019	DRAFT SHD Submission	GC	NP

APPLICATION REFERENCE NO.: ABP-306158-19
PLANNING

Henry J Lyons
 Architecture • Interiors +353 1 888 3333 51-54 Pearse Street
 henryjlyons.com info@henryjlyons.com Dublin D02 KA66

CLIENT
**Waterside Block 9
 Developments Limited**

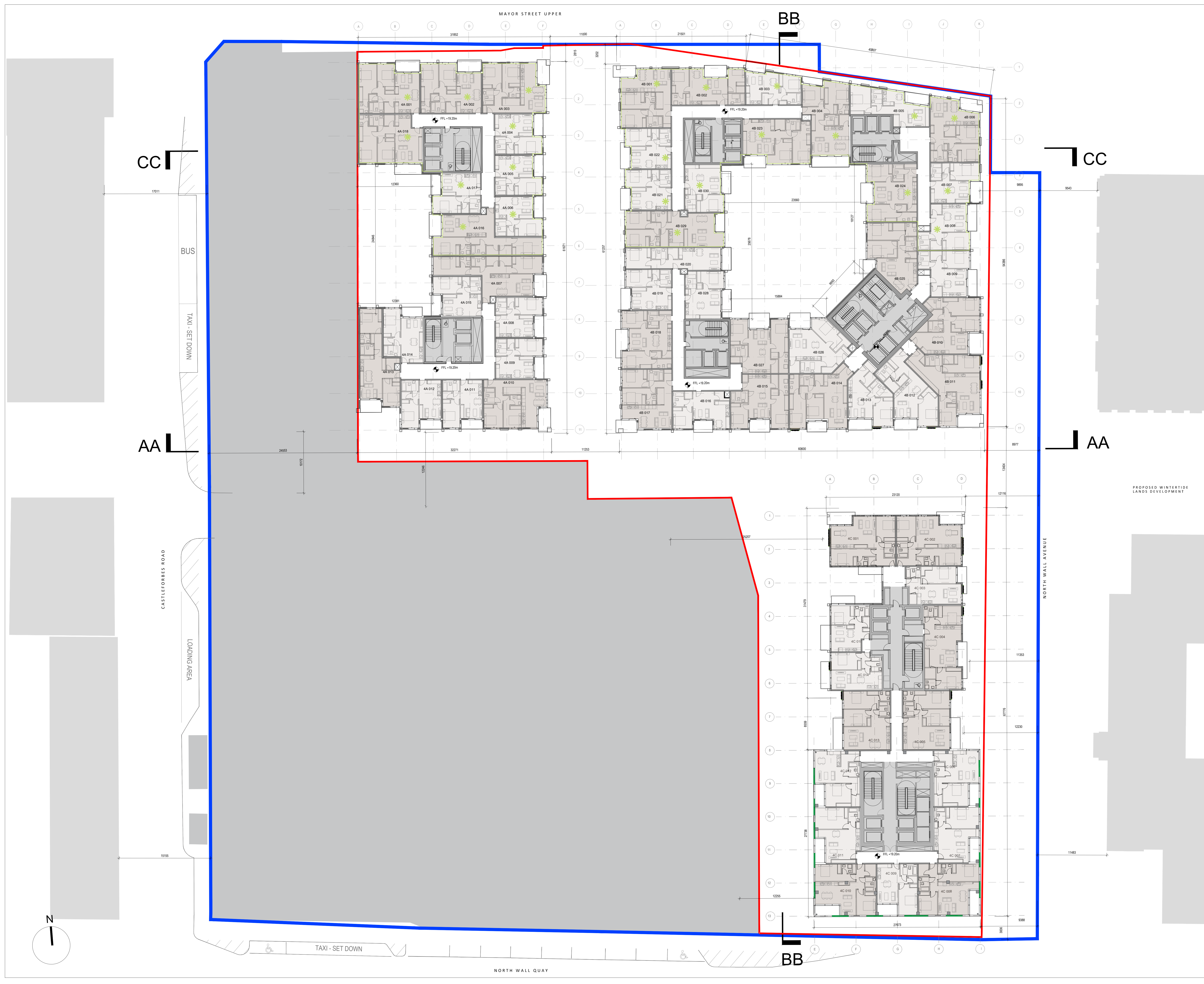
PROJECT
**WATERFRONT
 ~ South Central ~**

JOB NUMBER: 950527
 DATE: May 2020
 SCALE: 1:200 @A0
 DRAWN: NP
 CHECKED: GC
 FILE NAME: P 1013 Third Floor Plan

DRAWING
**Third Floor Level 03
 SCENARIO A**

BLOCK	DRAWING NUMBER	ZONE	REVISION
	P1013A		5

© Henry J Lyons
 T:\jobs\90-950527 City Block 9 Residential\CAD\Design\1000 GA Plans

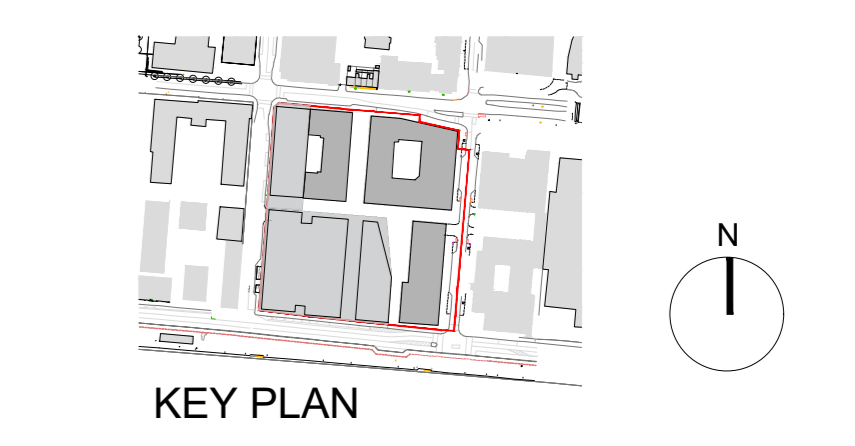


NOTE
 ALL DIMENSIONS TO BE CHECKED ON SITE
 NO DIMENSIONS TO BE SCALED FROM THIS DRAWING
 THIS DRAWING IS TO BE READ IN CONJUNCTION WITH
 RELEVANT CONSULTANTS DRAWINGS

ANY PROPOSALS EXTERNAL TO THE REDLINE ARE INDICATIVE ONLY.

- * Part V apartment
- 1 Bedroom apartment
- 2 Bedrooms apartment
- 3 Bedrooms apartment
- Residential Amenity
- Residential Support Facilities
- Other Uses/ Office
- Hoarding line - Not part of this application

NOTE:
 - COMMERCIAL LAYOUTS SHOWN FOR INDICATIVE
 PURPOSES ONLY SUBJECT TO SEPARATE
 PLANNING APPLICATION
 - LEVELS SHOWN RELATE TO OS DATUM LEVELS



NOTE
 ALL DIMENSIONS TO BE CHECKED ON SITE
 NO DIMENSIONS TO BE SCALED FROM THIS DRAWING
 THIS DRAWING IS TO BE READ IN CONJUNCTION WITH
 RELEVANT CONSULTANTS DRAWINGS

REV	DATE	DESCRIPTION	CHKD	DRN
5	27/05/2020	ABP Response Issue	GC	NP
4	24/04/2020	Issued for information	GC	NP
3	29/11/2019	SHD Consultation Request	GC	NP
2	21/11/2019	DRAFT SHD Submission	GC	NP
1	12/11/2019	DRAFT SHD Submission	GC	NP

APPLICATION REFERENCE NO.: ABP-306158-19
PLANNING

Henry J Lyons
 Architecture • Interiors +353 1 888 3333 51-54 Pearse Street
 henryjlyons.com info@henryjlyons.com Dublin D02 KA66

CLIENT
**Waterside Block 9
 Developments Limited**

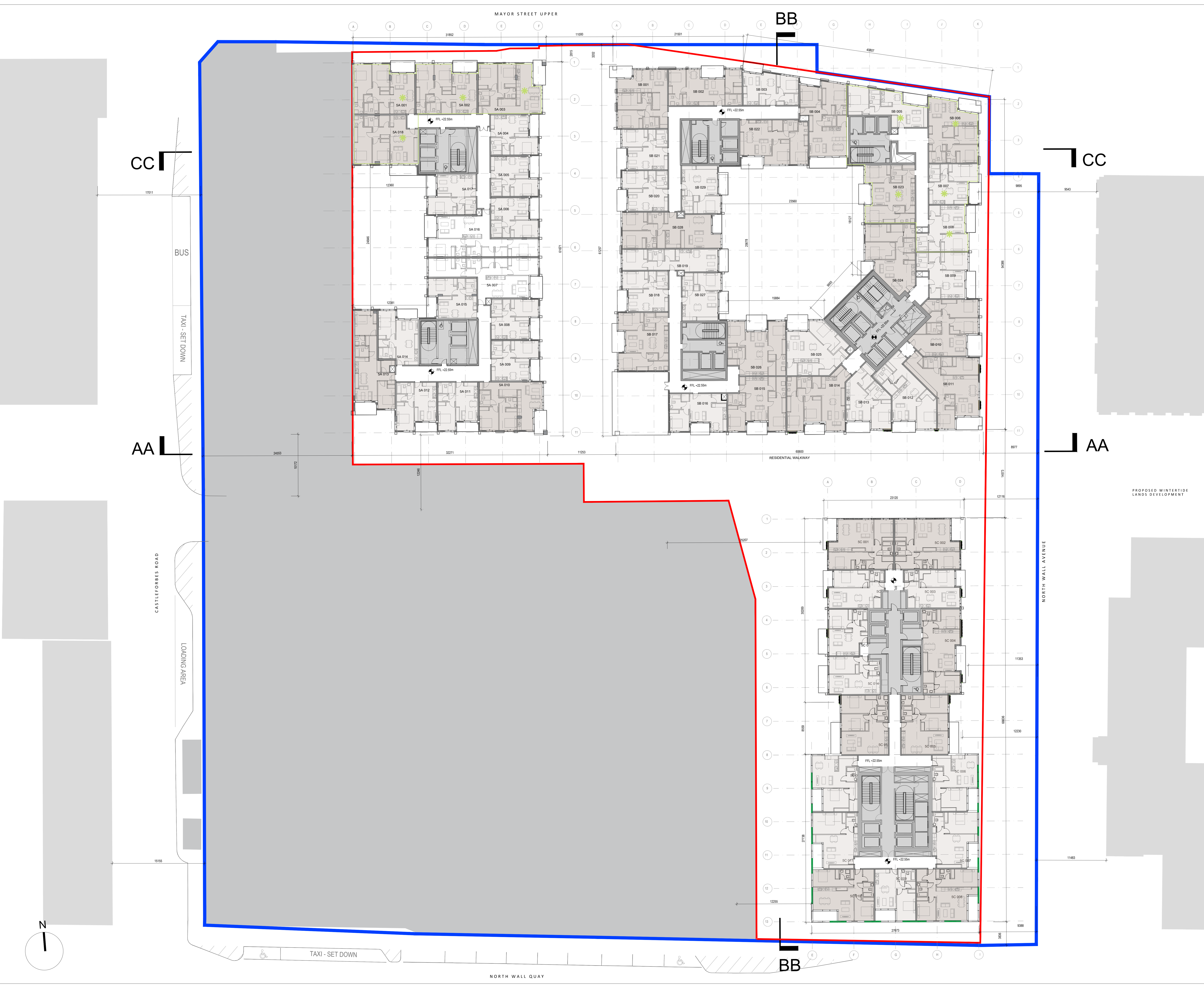
PROJECT
**WATERFRONT
 ~ South Central ~**

JOB NUMBER: 950527
 DATE: May 2020
 SCALE: 1:200 @A0
 DRAWN: NP
 CHECKED: GC
 FILE NAME: P_1014 Fourth Floor Plan

DRAWING
**Fourth Floor Level 04
 SCENARIO A**

BLOCK	DRAWING NUMBER	ZONE	REVISION
	P1014A		5

© Henry J Lyons
 T:\jobs\90-950527 City Block 9 Residential\CAD\Design\1000 GA Plans

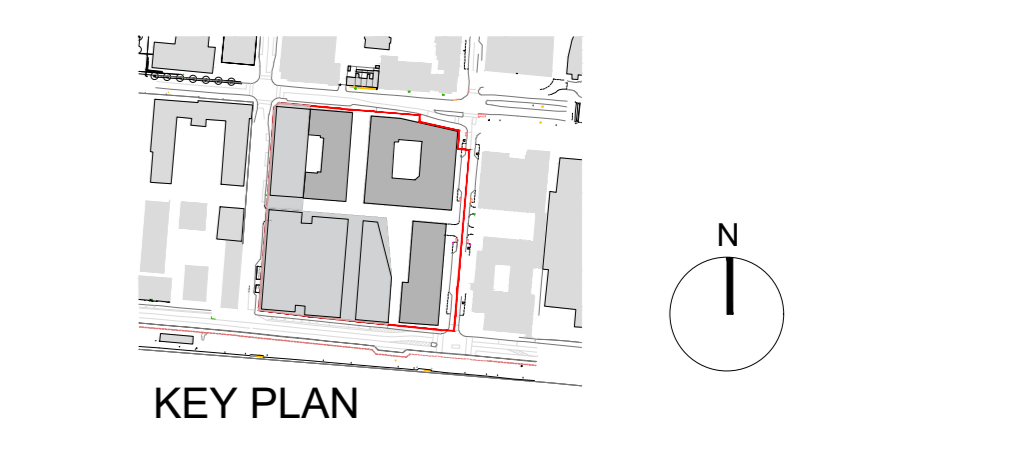


NOTE
 ALL DIMENSIONS TO BE CHECKED ON SITE
 NO DIMENSIONS TO BE SCALED FROM THIS DRAWING
 THIS DRAWING IS TO BE READ IN CONJUNCTION WITH RELEVANT CONSULTANTS DRAWINGS

ANY PROPOSALS EXTERNAL TO THE REDLINE ARE INDICATIVE ONLY.

- * Part V apartment
- 1 Bedroom apartment
- 2 Bedrooms apartment
- 3 Bedrooms apartment
- Residential Amenity
- Residential Support Facilities
- Other Uses/ Office
- Hoarding line - Not part of this application

NOTE:
 - COMMERCIAL LAYOUTS SHOWN FOR INDICATIVE PURPOSES ONLY SUBJECT TO SEPARATE PLANNING APPLICATION
 - LEVELS SHOWN RELATE TO OS DATUM LEVELS



NOTE
 ALL DIMENSIONS TO BE CHECKED ON SITE
 NO DIMENSIONS TO BE SCALED FROM THIS DRAWING
 THIS DRAWING IS TO BE READ IN CONJUNCTION WITH RELEVANT CONSULTANTS DRAWINGS

REV	DATE	DESCRIPTION	CHKD	DRN
5	27/05/2020	ABP Response Issue	GC	NP
4	24/04/2020	Issued for information	GC	NP
3	29/11/2019	SHD Consultation Request	GC	NP
2	21/11/2019	DRAFT SHD Submission	GC	NP
1	12/11/2019	DRAFT SHD Submission	GC	NP

APPLICATION REFERENCE NO.: ABP-306158-19
PLANNING

Henry J Lyons
 Architecture • Interiors +353 1 888 3333 51-54 Pearse Street
 henryjlyons.com info@henryjlyons.com Dublin D02 KA66

CLIENT
Waterside Block 9 Developments Limited

PROJECT
**WATERFRONT
 ~ South Central ~**

JOB NUMBER: 950527
 DATE: May 2020
 SCALE: 1:200 @A0
 DRAWN: NP
 CHECKED: GC
 FILE NAME: P 1015 Fifth Floor Plan

DRAWING
**Fifth Floor Level 05
 SCENARIO A**

BLOCK	DRAWING NUMBER	ZONE	REVISION
	P1015A		5